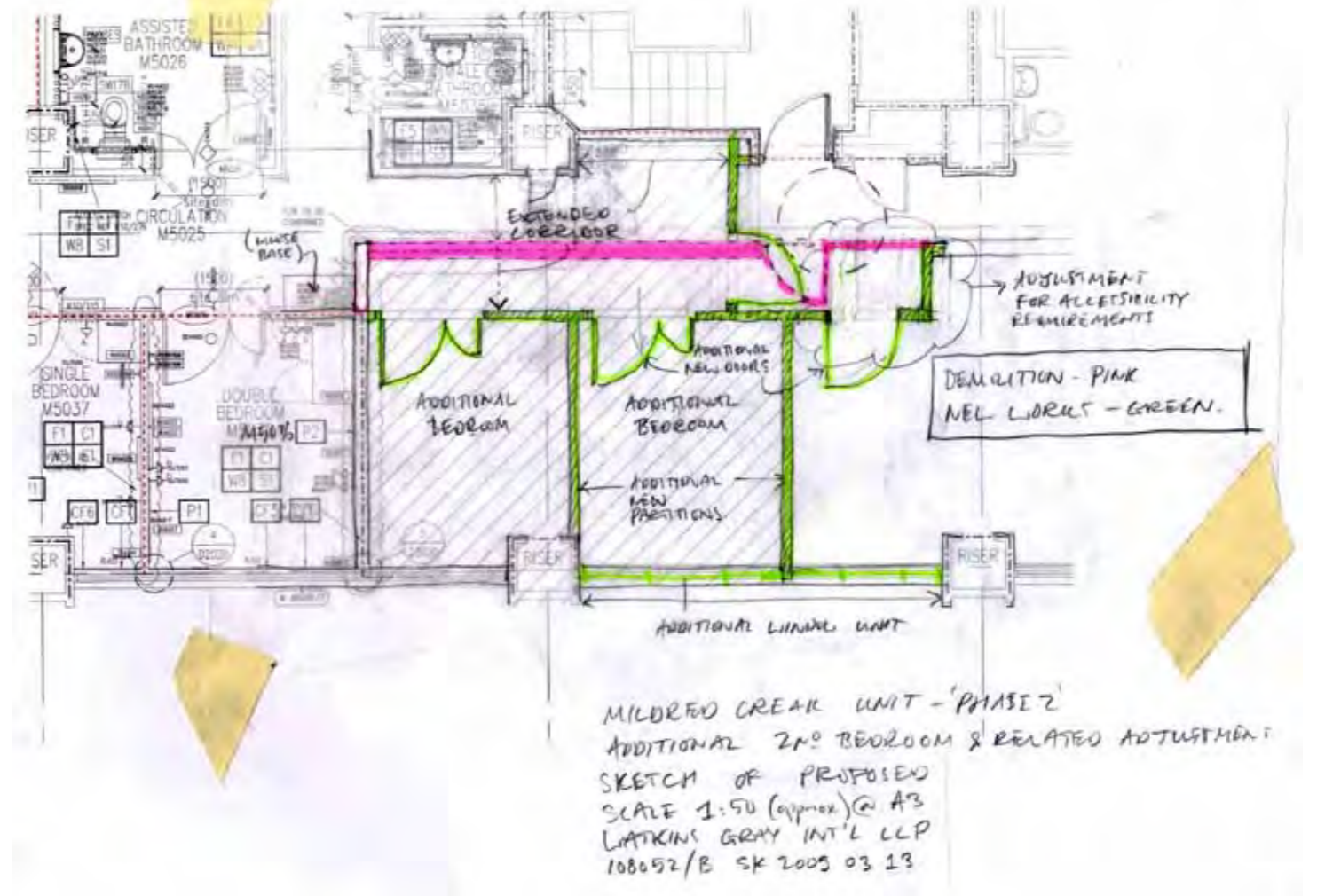
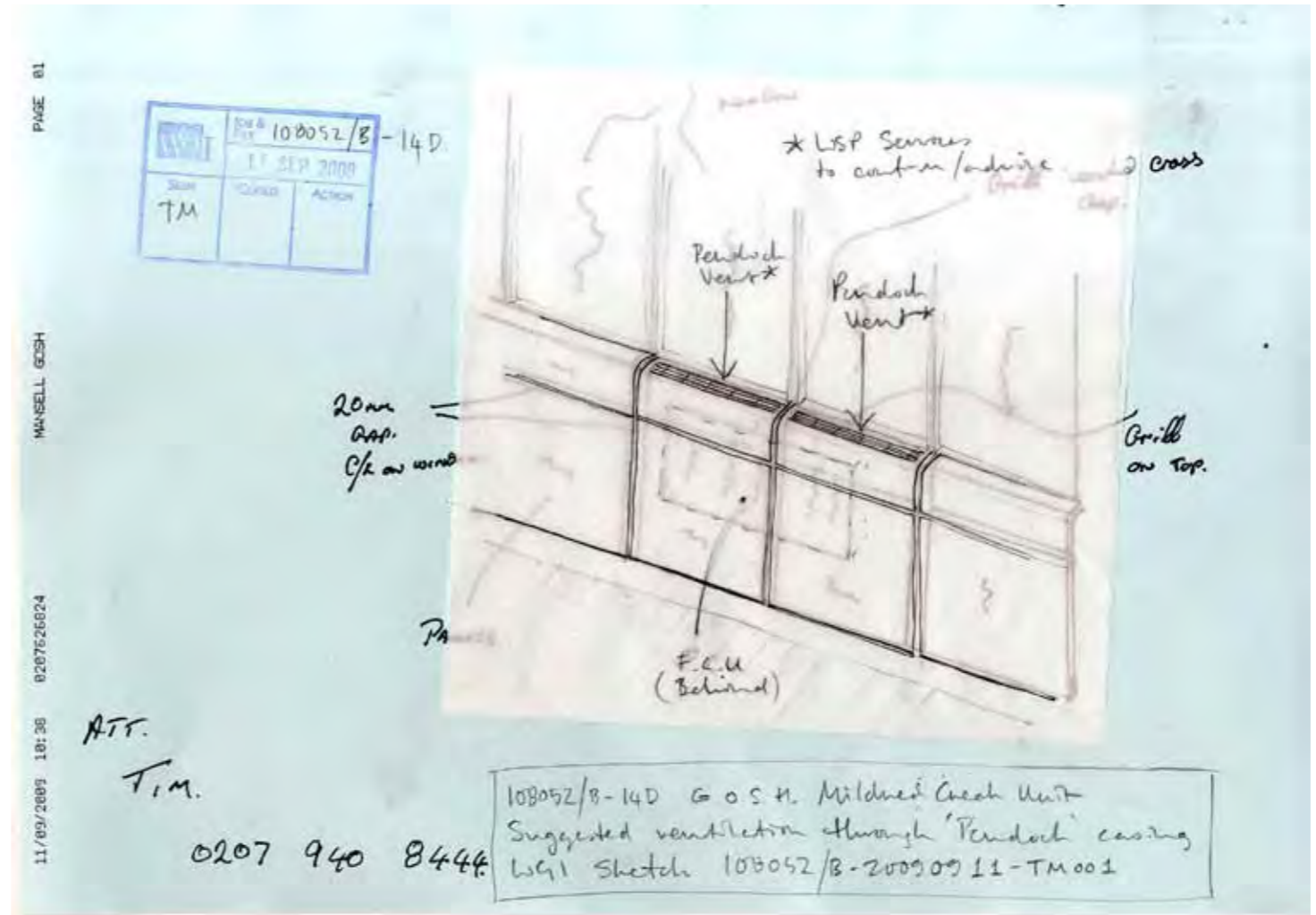
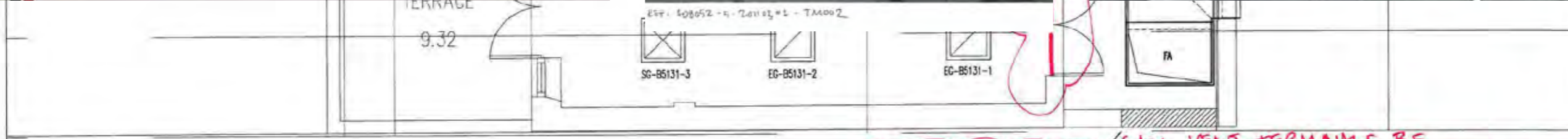
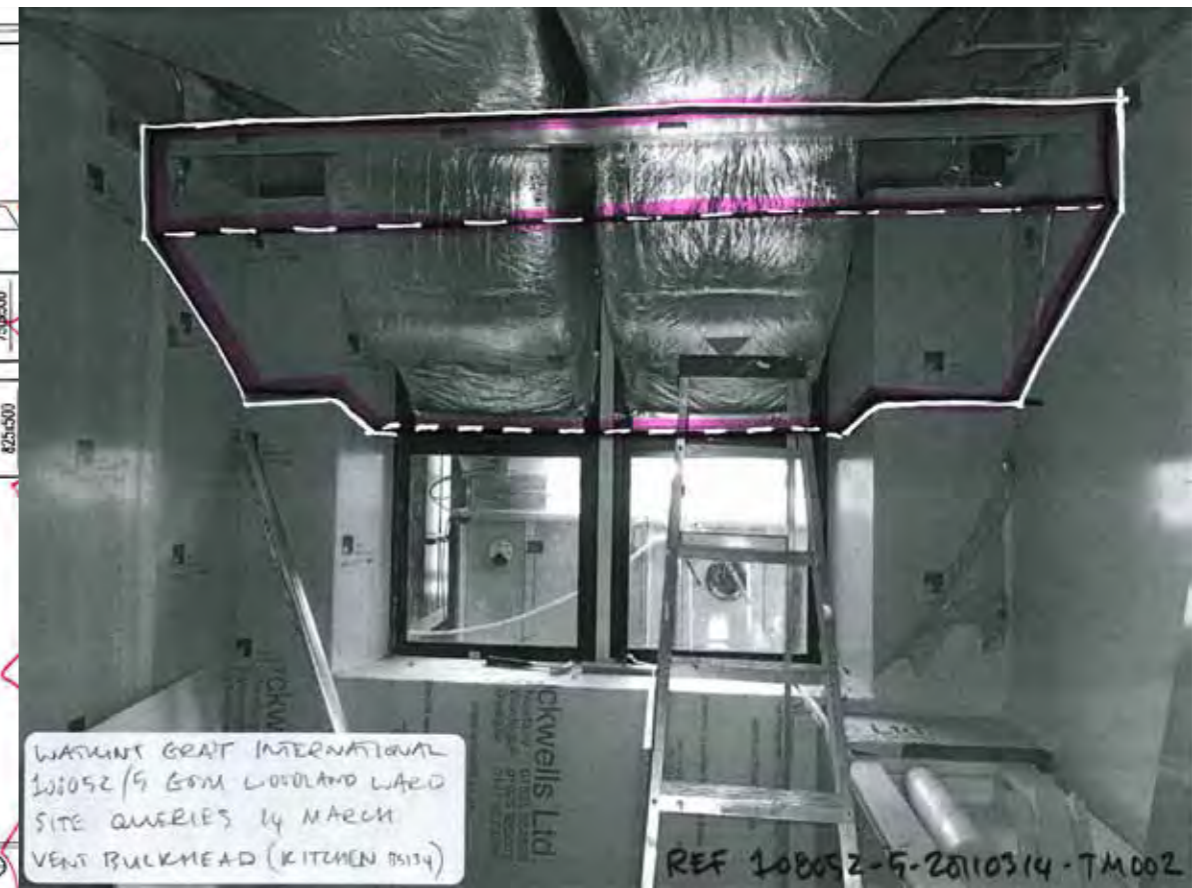
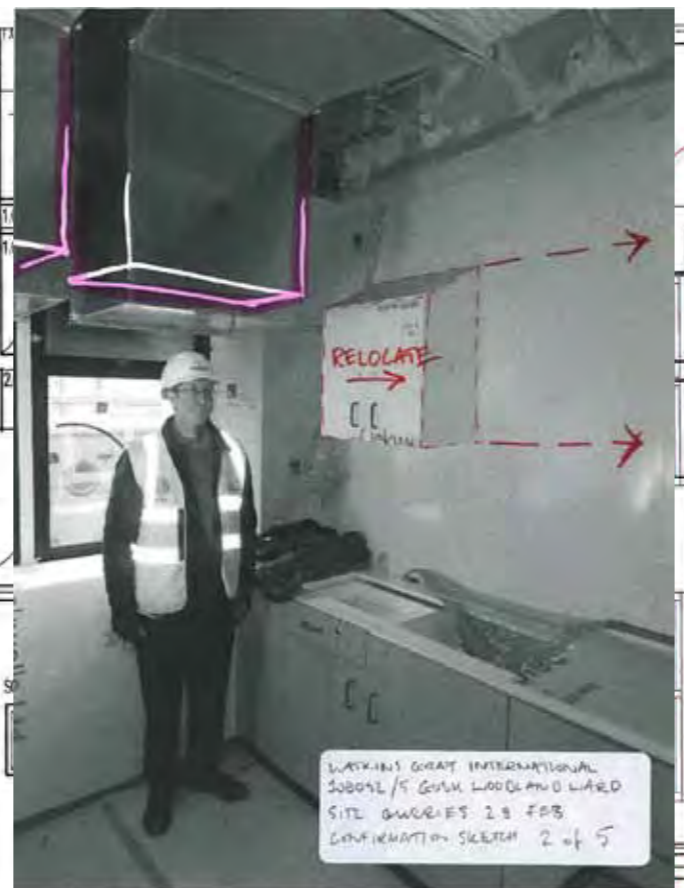


T C Matthew
 EXAMPLES OF WORK
 PROJECT ARCHITECT
 2008 - 2012

Great Ormond Street Hospital
 CAMHS Mildred Creek Unit
 Squirrel Ward general and urology surgical ward

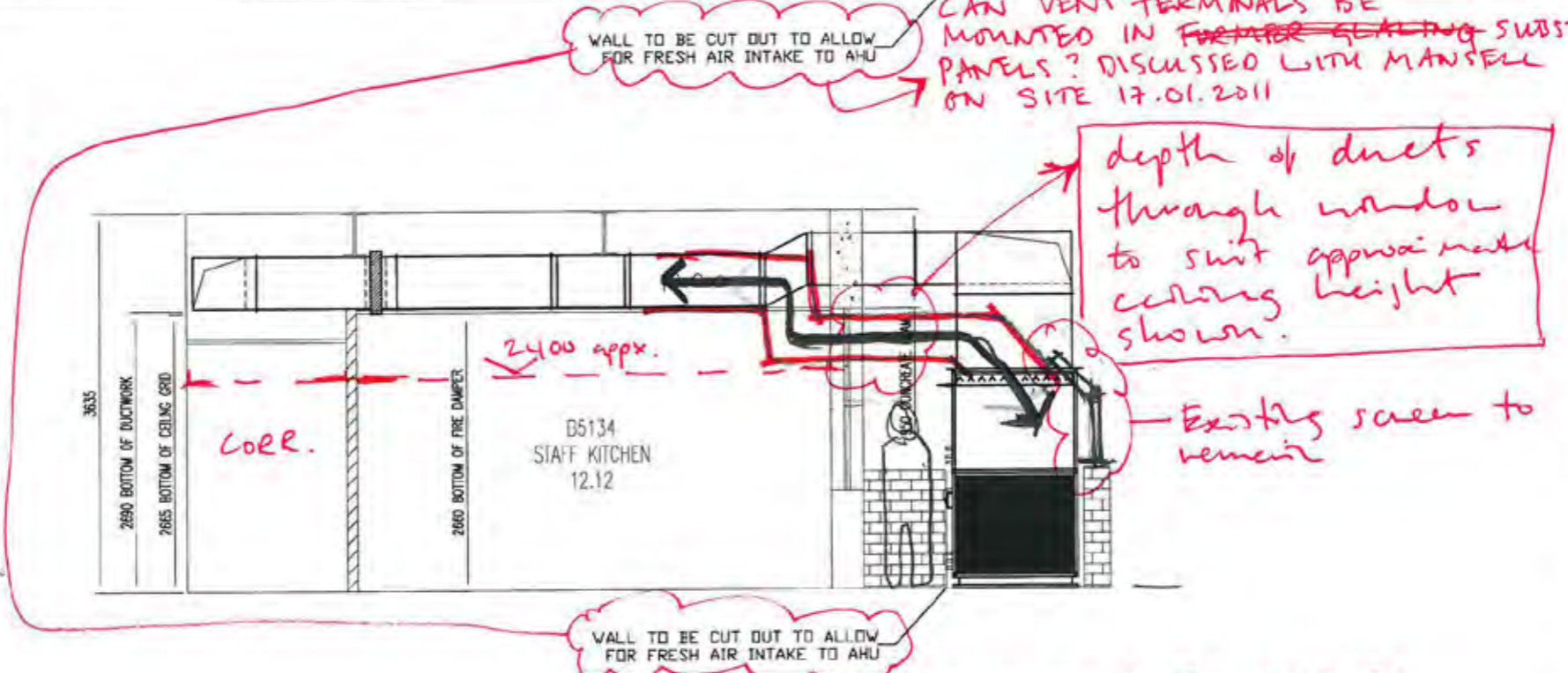
© Watkins Gray International LLP





Ø DENOTES DISTANCE FROM SOFFIT ABOVE TO U/S RECT. DUCTS / VAN EDGES AND E OF CIRC. DUCTS
 Ø DENOTES DISTANCE FROM SSL TO U/S RECT. DUCTS / VAN EDGES AND E OF CIRC. DUCTS

WGI Comments
 17.01.2011
 (FOLLOWING REVIEW
 ON SITE 17 01 2011)
 [Signature]



WALL TO BE CUT OUT TO ALLOW FOR FRESH AIR INTAKE TO AHU

N.B. EXTERNAL DUCTS TO BE INSTALLED AT FAR FROM PERIMETER AS POSSIBLE TO ~~REDUCE~~ MINIMISE VISUAL IMPACT FROM OTHER BUILDINGS.

REV	DESCRIPTION	DATE
FOR APPROVAL		
CLIENT  MEDICAL SERVICES HEATING AIR CONDITIONING AND ELECTRICAL ENGINEERS 10th Floor, 200 Princes Street, Glasgow, G2 4JF UK Tel: 011 884 6162 Fax: 011 884 1000		
PROJECT GOSH WOODLAND WARD		
TITLE VENTILATION LAYOUT AHU & KITCHEN AREA		
 Ventilation Sheetmetal Ltd Tel: 01323 743170 Fax: 01323 743173 Email: info@vsl.cc		
DRAWN	DATE	DATE
SCALE: 1:50 @ A1	CONTRACT No. 011	
DRG No. VSL-6277-03		

GREAT ORMOND STREET

108052/5-14d

10 DEC 2010

N.B. OMIT DIVISIONS TO CONSOLE, POWER AND DATA TRUNKING TO BE ABOVE DESK HEIGHT

STAFF BASE B5012

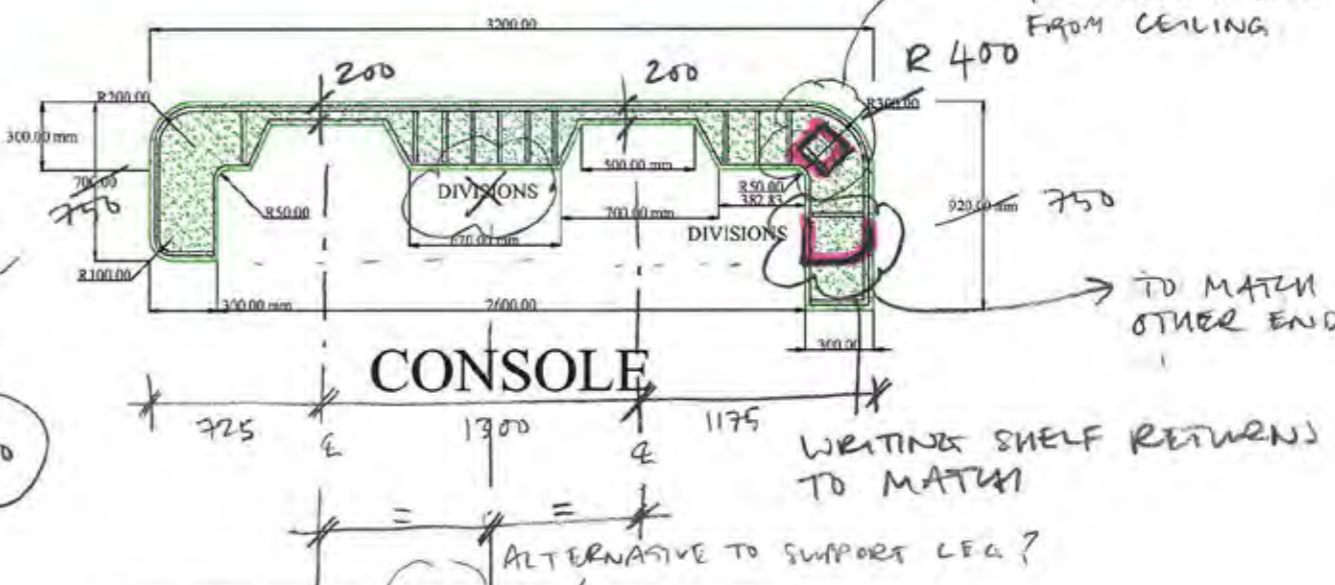
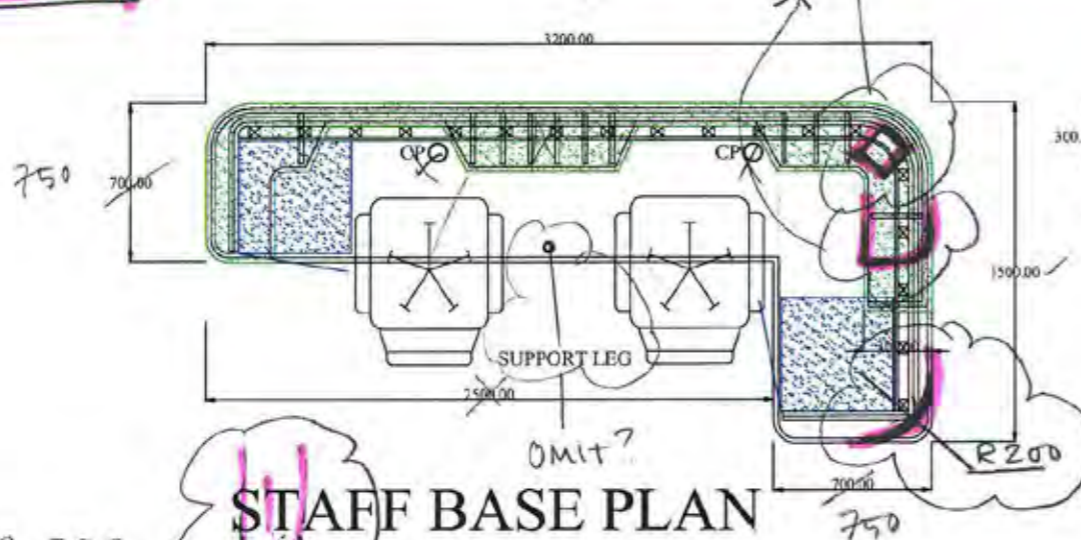
LAMINATE COLOURS:

WRITING SHELF } POLYRET M053
WORKTOP

MODESTY PANELS } POLYRET D018
BALANCED FACING PANELS

Drawn	Checked	Approved
JM		
SC		

200x200mm sq PLASTERBOARD 'POWER POLE' FOR POWER & DATA FROM CEILING



POWER POLE (INDICATIVE)

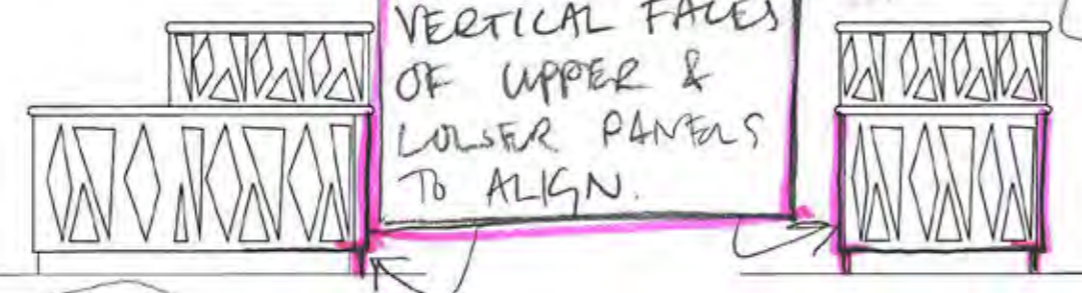
STAFF BASE PLAN

LOWER FRAME

WHEELCHAIR USER KNEE RECESS - MIN DEPTH 575MM

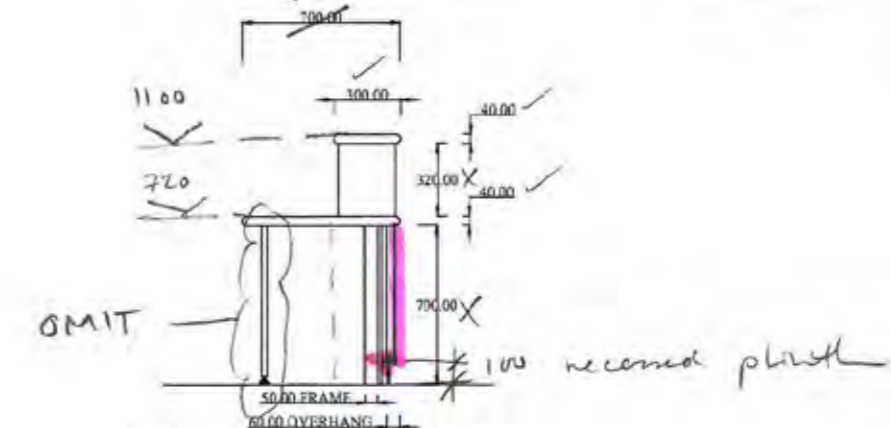
STAFF BASE FRONT VIEW

N.B. VERTICAL FACES OF UPPER & LOWER PANELS TO ALIGN.



LEFT SIDE VIEW

RIGHT SIDE VIEW



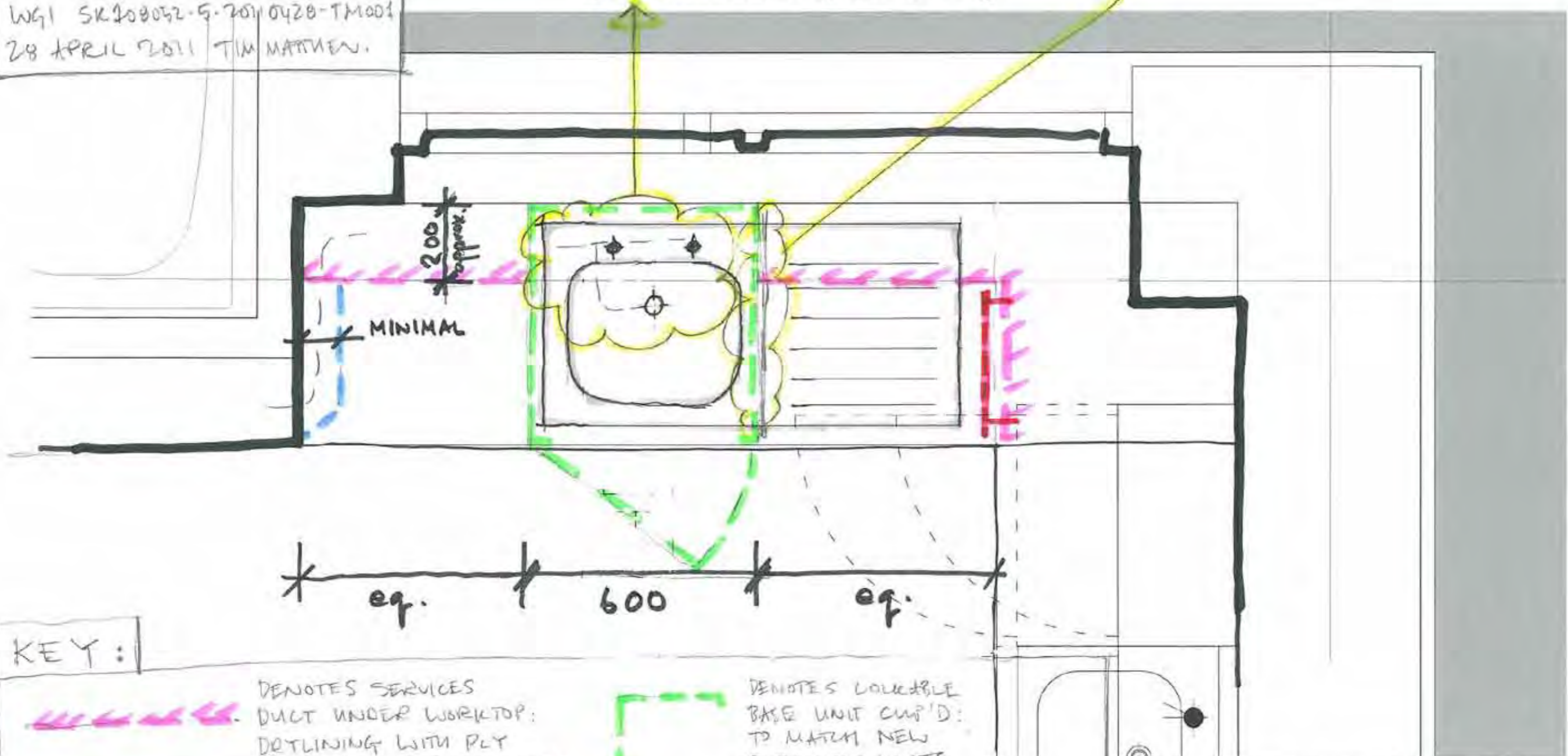
SECTION

108052/5 GYM WOODLAND WARD
 SERVICES CONCEALMENT SKETCH (DEFECT NO 11)
 LOWER PLAT SINK - PLAT SENSOR ROOM TR5140


WGI SK 108052-5-2011 0420-TMOD1
 28 APRIL 2011 TIM MATHEN.


NOTE: ADJUST SINK WHITE RUN TO
 SUIT NEW BASE UNIT ENCLOSURE
 (ALL SERVICES TO BE CONCEALED)


REMOVE NEW WORKTOP SUPPORT
 BRACKET (SUPPORT FROM NEW CUP'D)




KEY:

 DENOTES SERVICES DUCT UNDER WORKTOP: DRYLINED WITH PLY PATRESS FOR ROBUSTNESS

 DENOTES LOCALISED ROBUST DRYLINED BOXING OUT TO CONCEAL PIPES TO FINISITE BEYOND UP TO UNDERSIDE OF WORKTOP WITH RAKED SIDES TO AVOID SHARP CORNERS

 DENOTES LOCALIBLE BASE UNIT CUP'D: TO MATCH NEW D. BAILEY UNITS ADJACENT

 DENOTES PROPRIETARY ACCESS HATCH (ASSUMES VALVE ACCESS IS REQUIRED).

NOTE: ALL NEW WORK IN ALLOWANCE WITH WOODLAND WARD DESIGN INFORMATION. REFER ALSO TO DEFECTS LIST